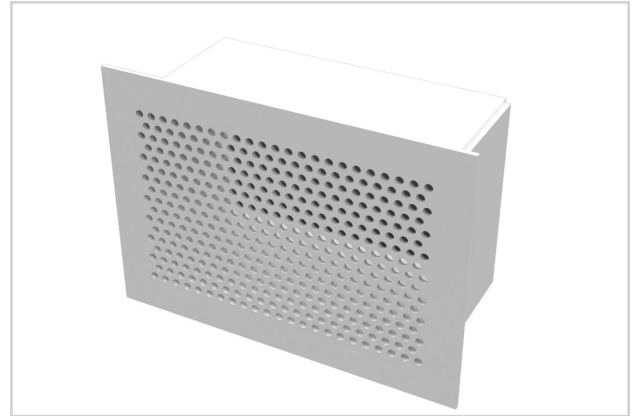


SG-PR

- Face plate: $\frac{3}{16}$ " steel with $\frac{5}{16}$ " diameter holes on $\frac{7}{16}$ " staggered centers and 1" border
- Sleeve: $\frac{3}{16}$ " steel
- All welded construction
- Transfer grille model available for secure air transfer through wall



SG-PR



humid areas

prevents corrosion

metric sizes

maximum security



See website for Specifications

MODELS:

SG-PR / Steel
SG-PRA / Aluminum
SG-PRT / Steel
SG-PR-SS / Stainless Steel

FINISHES:

Standard Finish - #26 White
Optional Finish - #04 Mill

OVERVIEW

Round Perforated

The SG-PR is a maximum security grille. The design of this grille allows a greater effective free area and superior airflow without compromising security and safety. Model SG-PRA is used in areas where moisture may cause a problem with standard steel grilles. The SG-PRT is provided with two face plates welded to each end of a sleeve for block walls or for pouring in place in concrete walls.

OPTIONS

- Angle Frame - $1\frac{1}{2}$ " x $1\frac{1}{2}$ " x $\frac{3}{16}$ " steel angle iron shipped loose for field welding. Frame is mill finish.
- Anchor Bars - $\frac{3}{4}$ " diameter steel bars, 3" in height. Positioned 3" from back of face plate on top and bottom of sleeve.
- Face Operated Damper - AG-15 steel opposed-blade damper. Slot operated from face of the grille.
- Rear Operated Damper - AG-15 steel opposed blade damper. Slot operated from rear of the grille.
- Sleeve Barrier Grille - constructed of $\frac{3}{4}$ " diameter steel bars with maximum 6" opening